

10'' WALL MOUNTED SOHO B SERIES



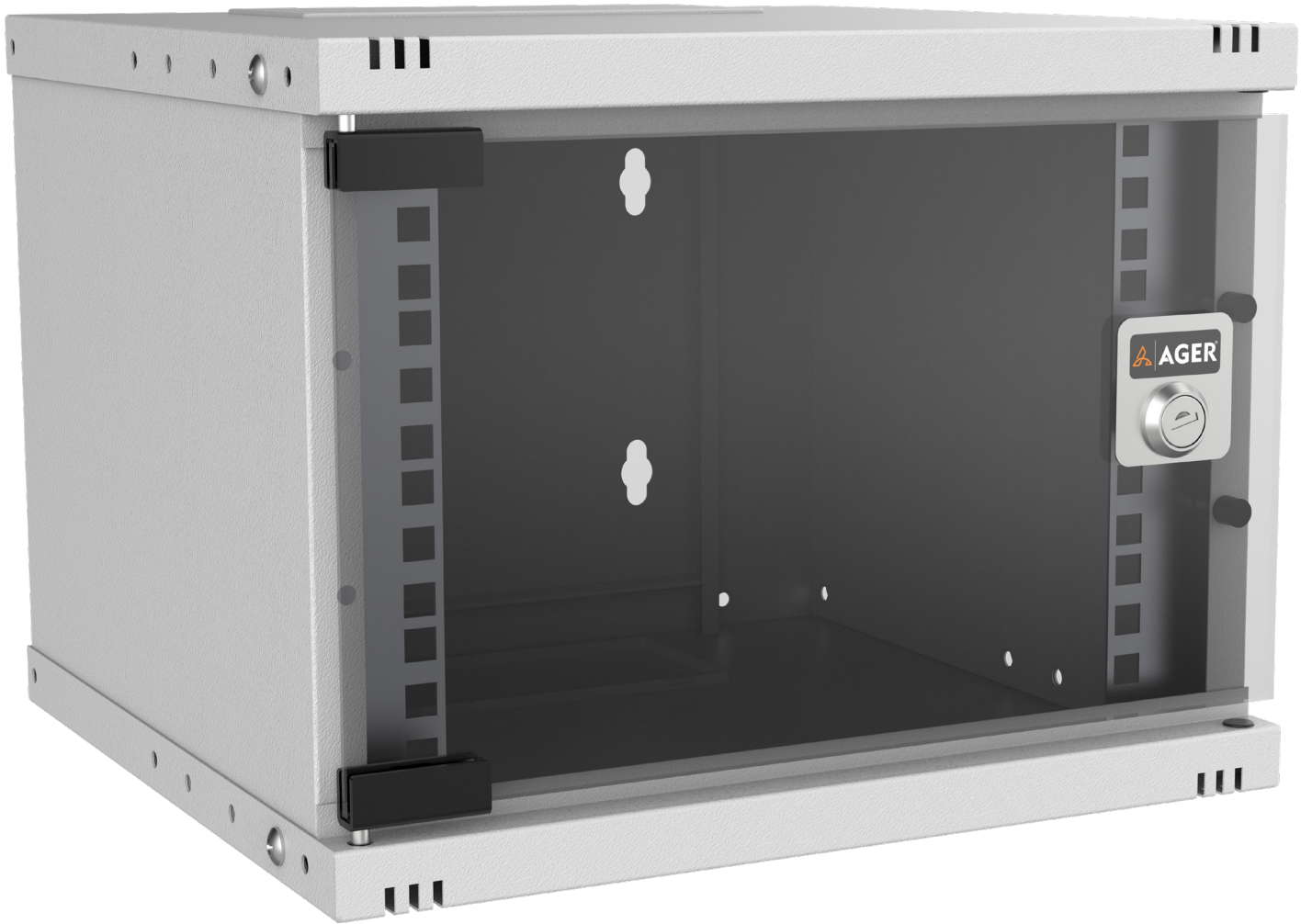
AGER Soho cabinets; are used in small-sized network solutions with its solid and simple structure. It adapts to the usage areas such as offices, schools, bank branches, hospitals with its aesthetic visuality.



Color Options

RAL7035 Light Grey

RAL9005 Black



Aesthetics

Aesthetic and stylish design helps to adapt easily to usage places. Front glass is 4mm, smoked, tempered, high resistance to fracture and full-length with cam lock.

Purposes of Use

Assembly of small systems.
Network floor distributions.
Wall type network installation applications.
Distribution terminal.





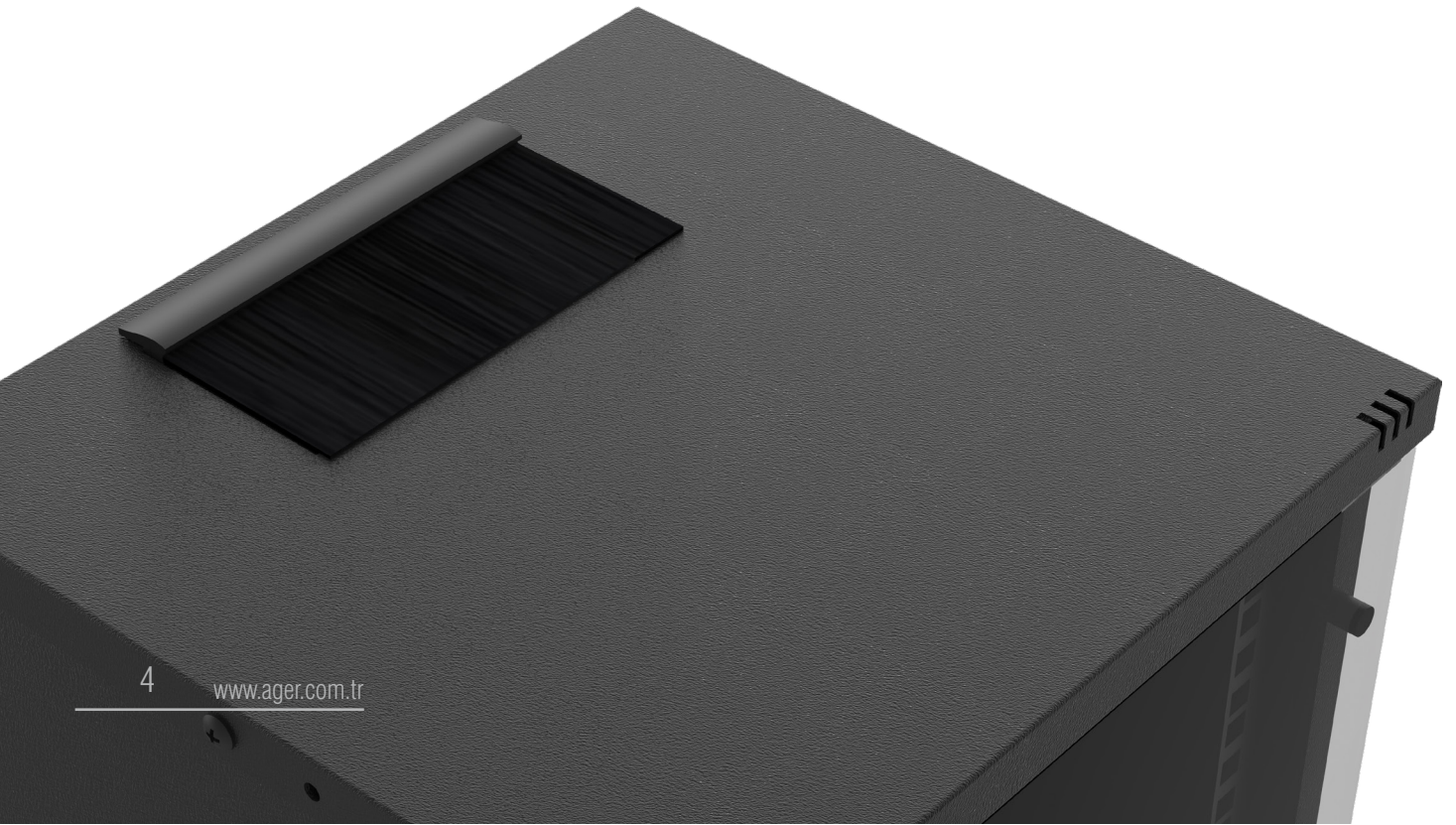
Wall Mounting

After fixing the rear panel to wall, the cabinet to be hanged over the rear panel. Then cabinet's fixing to the wall is completed.

Cable Entry

There is one cable entry on the top and bottom plate. The top cable entry is a screwless brush and the bottom cable entry has a PVC cover.

The Brush and the PVC cover are interchangeable. Dust entry can be prevented by installing the brush where the cables will enter.



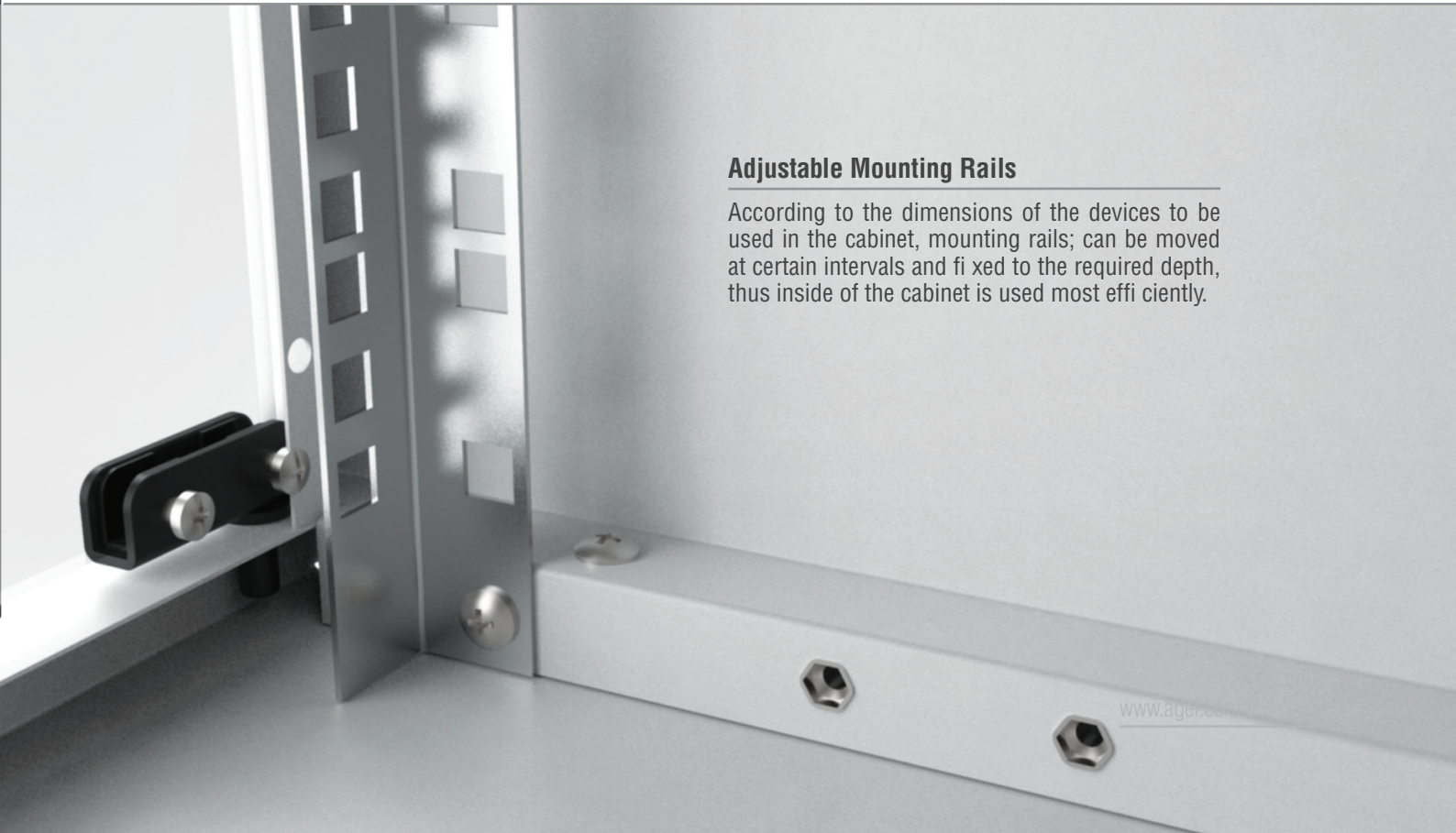


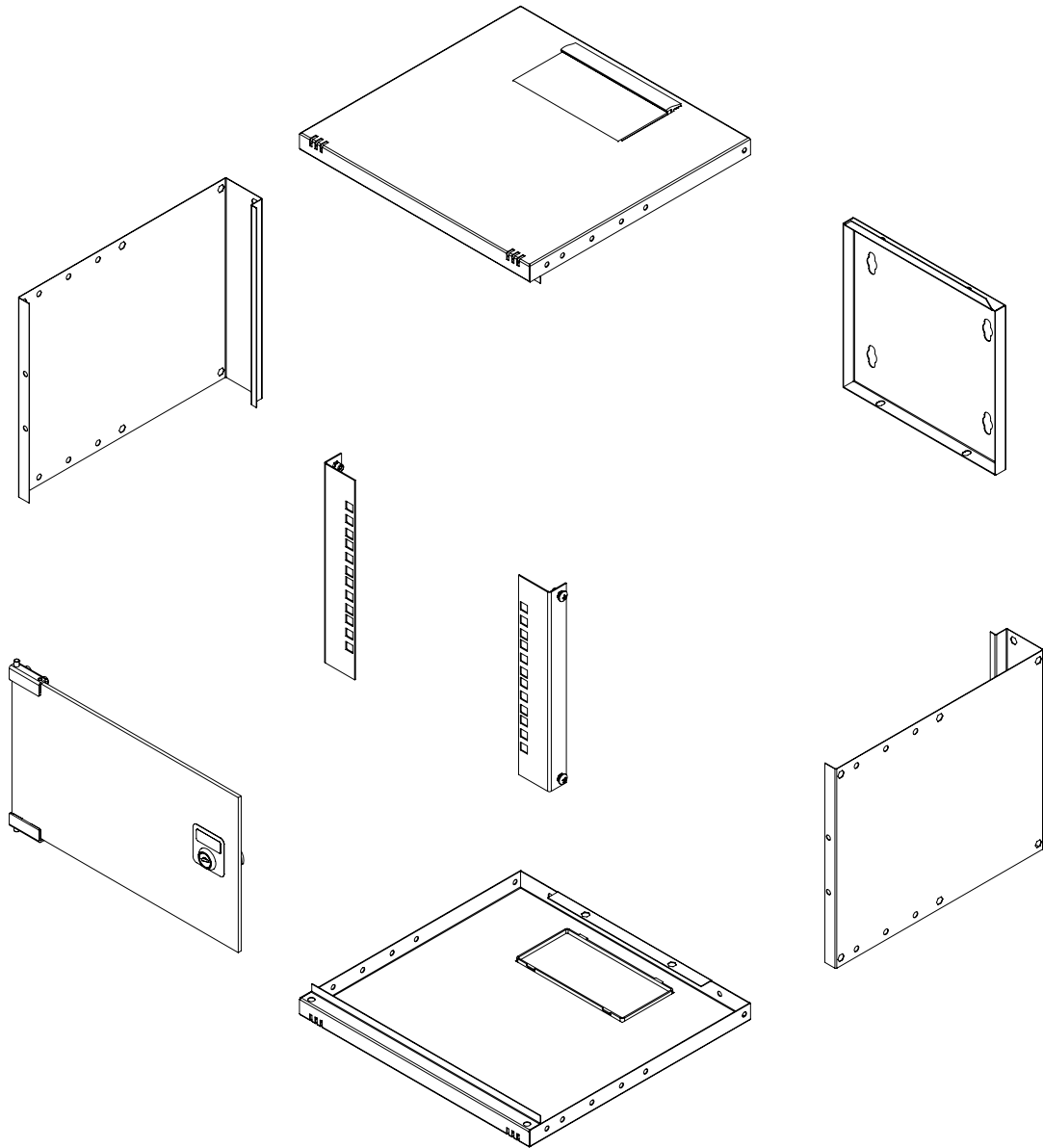
Volume

Soho Cabinets have all the internal volume needed for cabling of Switch, Router Patch, Panel, Socket and similar network equipment.

Adjustable Mounting Rails

According to the dimensions of the devices to be used in the cabinet, mounting rails; can be moved at certain intervals and fixed to the required depth, thus inside of the cabinet is used most efficiently.





Material

- 0.8 mm DKP

IP Classification

- As a standard IP20
- IP40 when solid metal panel applied for all access

Color Options

- RAL9005 Black
- RAL7035 White

Doors

- Door options are available.
- Single point locking system
- Doors can be opened to 120 degree.
- Doors can be opened to left or right direction

Mounting Rails

- 10'' Mounting rails; adjustable in depth of the cabinet
- 1.2mm DX51D galvanic

Bottom

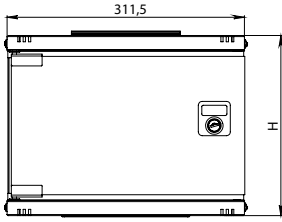
- PVC cable entry cover is available

Top Sheet

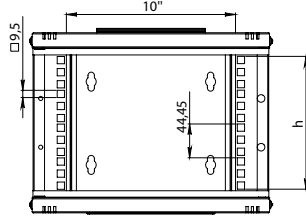
- Brushed cable entry is available

Loading Capacity

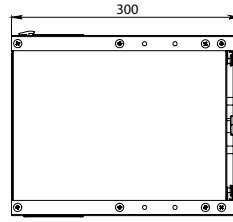
- Recommended up to 30 kg Loading capacity



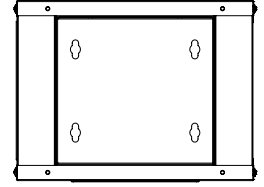
ÖN GÖRÜNÜŞ



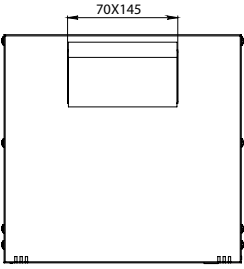
ÖN KAPAKSIZ GÖRÜNÜŞ



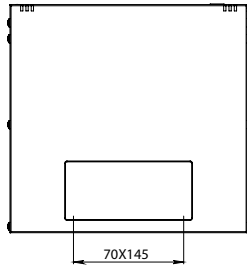
YAN GÖRÜNÜŞ



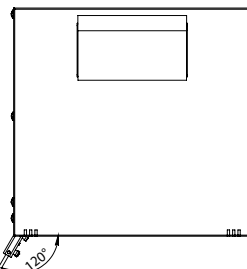
ARKA GÖRÜNÜŞ



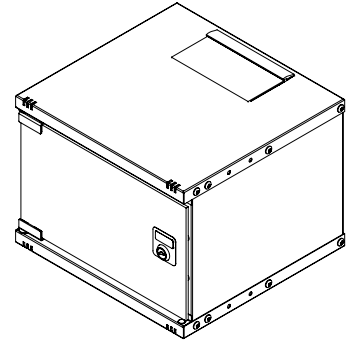
ÜST GÖRÜNÜŞ



ALT GÖRÜNÜŞ



AÇIK KAPAK GÖRÜNÜŞ



İZOMETRİK GÖRÜNÜŞ

10" Wall Mounted Ager SOHO Cabinets

Product Code	Product Description	Height Size in U	Width (W) (Mounting rails between)	Width (w) (mm)	Depth (D) (mm)	Height (H) (mm)	Weight (Net) (kg)	Weight (Gross) (kg)
AG-SH04U3030XX-YY	6U 10" Ager Soho Wall Mounted Cabinets W=300mm D=300mm	4U	10"	312	300	237	4,5	5
AG-SH06U3030XX-YY	6U 10" Ager Soho Wall Mounted Cabinets W=300mm D=300mm	6U	10"	312	300	326	5,5	6
AG-SH07U3030XX-YY	6U 10" Ager Soho Wall Mounted Cabinets W=300mm D=300mm	7U	10"	312	300	370	6	6,5
AG-SH09U3030XX-YY	6U 10" Ager Soho Wall Mounted Cabinets W=300mm D=300mm	9U	10"	312	300	459	7	7,5
AG-SH012U3030XX-YY	6U 10" Ager Soho Wall Mounted Cabinets W=300mm D=300mm	12U	10"	312	300	593	8	8,5

XX = Colour Code, B1 White RAL 7035, S1 Black RAL 9005, during order please specify the colour choice.
YY = M1 for pre-assembled, D1 for flat pack.